

# Cycle Routes

Darwin Forest

LUXURY LODGE HOLIDAYS

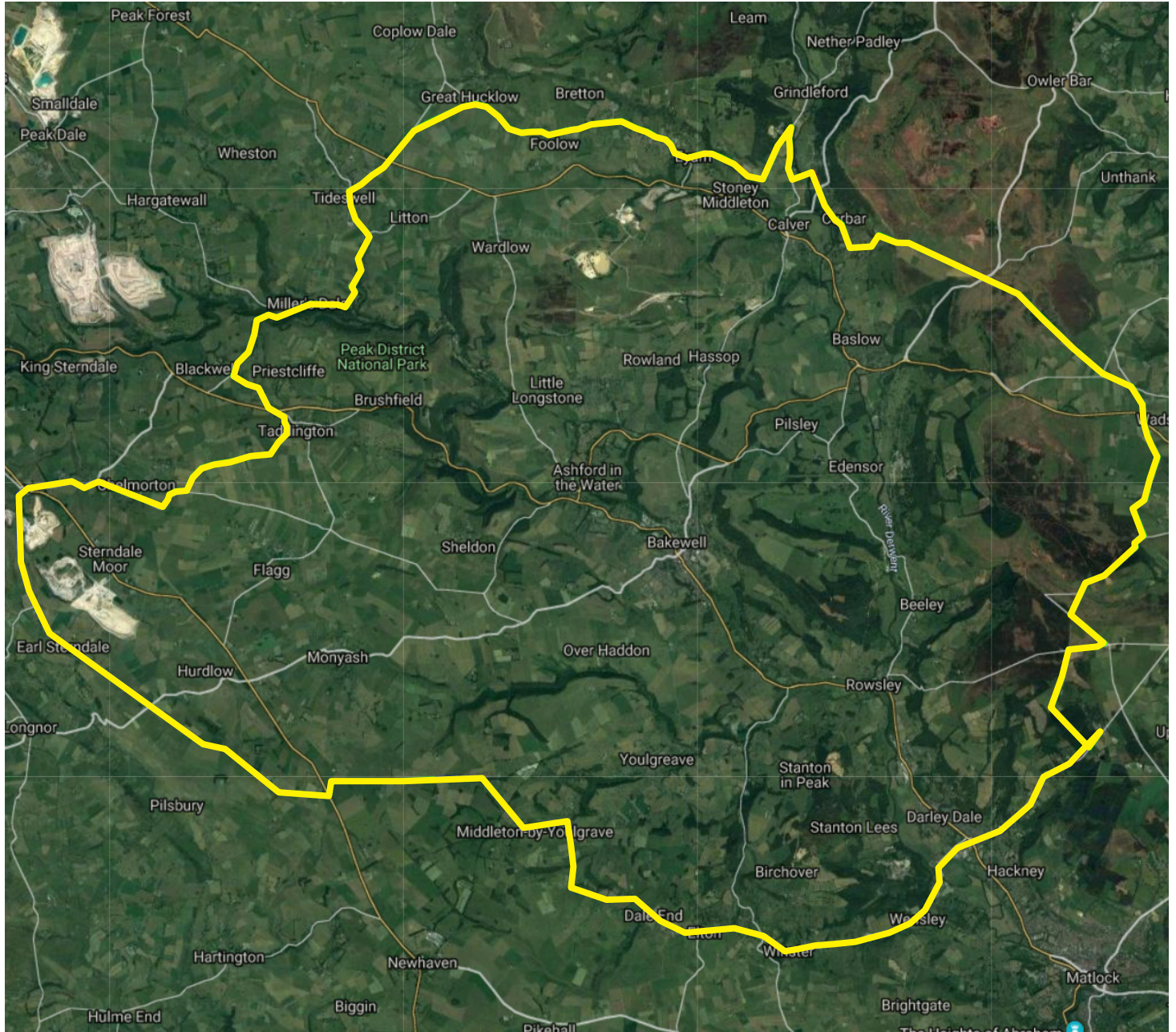


ROUTE NAME

## White Peak circuit

DIFFICULTY

VERY  
HARD



Download the route GPX files at  
[www.darwinforest.co.uk/cycling](http://www.darwinforest.co.uk/cycling)

In partnership with Landal GreenParks



# Cycle Routes

Darwin Forest  
LUXURY LODGE HOLIDAYS



ROUTE NAME

## White Peak circuit

DIFFICULTY

VERY  
HARD

Directions:

1	Right out of Landal Darwin Forest and descend Sydnope Hill through Two Dales.	18	Left in Taddington (signpost Buxton.) left at A6 T-jct then right (signpost Priestcliffe).
2	At A6 T-jct right then imm. left at traffic lights (signpost Darley Bridge, Wensley and Winster B5057)	19	Right at crossroads towards Millers Dale and Tideswell B6049.
3	SA uphill through Wensley follow signs to Winster.	20	Continue SA through Tideswell Dale then into village.
4	Continue SA through Winster (Elton Road)	21	At crossroads right then imm. left (signpost Bradwell and Castleton). Right (signpost Grindlow and Foolow).
5	SA at crossroads (signpost Elton)	22	At crossroads right (signpost Foolow and Eyam).
6	SA through Elton then downhill (signpost Gratton and Middleton).	23	SA through Eyam. Bear left at T-jct in direction of Riley Graves. Continue SA where the road is closed to motor and horse drawn vehicles.
7	At Gratton (Cheese Factory holiday cottages) left uphill into Middleton by Youlgreave	24	Right at T-jct (B6001) 1st left (signpost Froggatt) SA over river.
8	At T-jct right (signpost Youlgreave and Bakewell)	25	Right at T-jct (signpost Sheffield - Froggatt Lane).
9	Sharp left at T-jct (signpost Newhaven and Buxton). SA uphill ignore left fork, continue SA.	26	SA (signpost Curbar). Left at T-jct (signpost Chesterfield and Sheffield). Climb up to Curbar Gap.
10	Bear left (signpost Monyash) up Long Rake. Left at T-jct (no sign).	27	SA at crossroads (signpost Chesterfield and Cutthorpe). SA at next crossroads.
11	On reaching T-jct with A515 left (signpost Ashbourne) then imm. Right (signpost Pilsbury and Parsley Hay).	28	Left at T-jct. right at next T-jct (Top Lane - signpost East Moor and Chesterfield).
12	At T-jct right (signpost Pilsbury, Crowdicote and Earl Sterndale).	29	At crossroads with A610 go diagonally over towards Beeley. Continue towards Beeley.
13	SA at crossroads (signpost Earl Sterndale).	30	At T-jct right (signpost Beeley and Darley Dale).
14	Right at T-jct into Earl Sterndale. Fork right at village green opposite The Quiet Woman public house.	31	Left at crossroads. Right at multi-jct (signpost Darley Dale and Matlock).
15	Right at T-jct uphill past school. Right at T-jct (no sign).	32	1st left Flash Lane (no sign).
16	At T-jct with A515 TR then imm. left (signpost Bakewell, Chelmorton and Chesterfield A5270).	33	Left at crossroads and left back into Landal Darwin Forest.
17	Right (signpost Chelmorton) left at crossroads with Pennine Bridleway (signpost Taddington).		

SA - Straight ahead

START / END POINT	Landal Darwin Forest DE4 5PL
DISTANCE	74km / 46miles
ASCENT	1,111m / 3645ft
GRADE	Very hard
TERRAIN	100% road
CAFES	Darley Dale, Parsley Hay, Brierlow Bar, Tideswell, Foolow, Eyam
PUBS	Darley Dale, Winster, Elton, Earl Sterndale, Millers Dale, Tideswell, Foolow, Eyam
SHOPS	Two Dales, Darley Dale, Winster, Tideswell, Eyam
RISK ASSESSMENT	Special care needed at junctions, busy roads, narrow lanes and steep descents.

COMPLETED BY:

Carol Parsons,  
Glory Days Bikes



GLORY DAYS

25/06/2019

In partnership with Landal GreenParks

